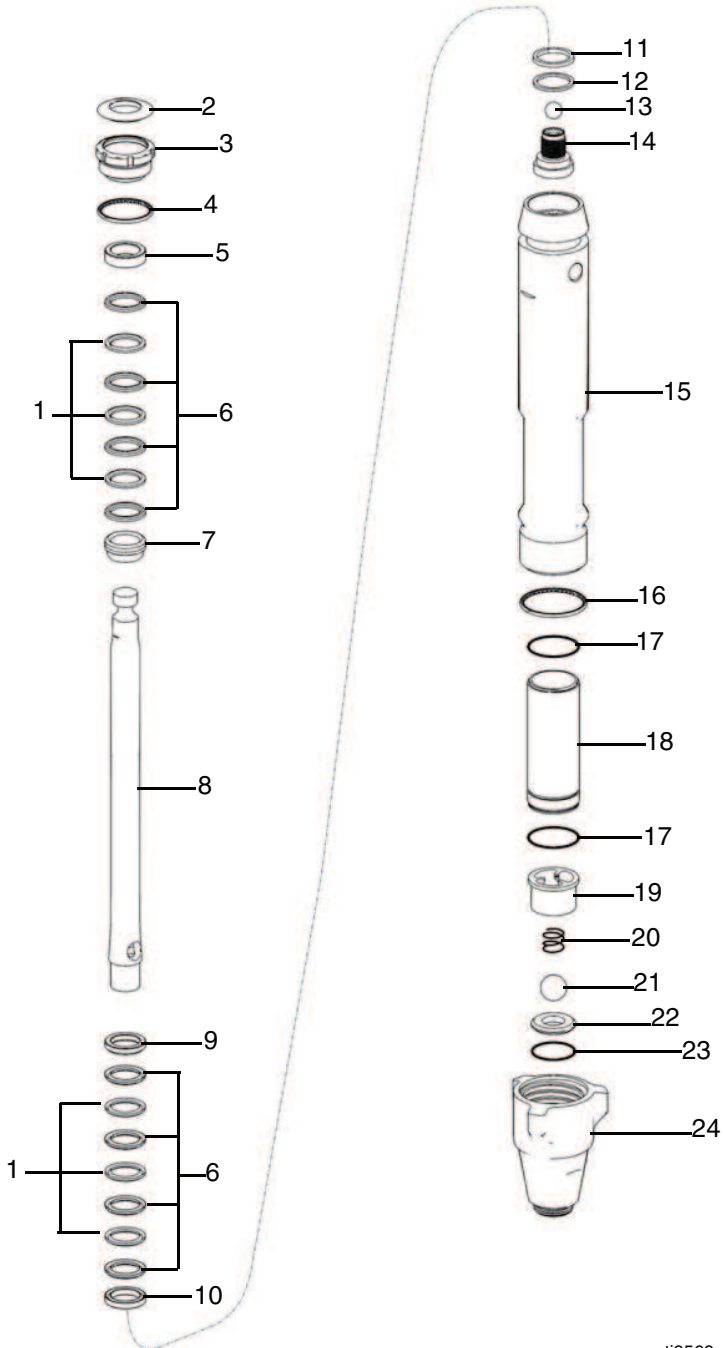


Parts

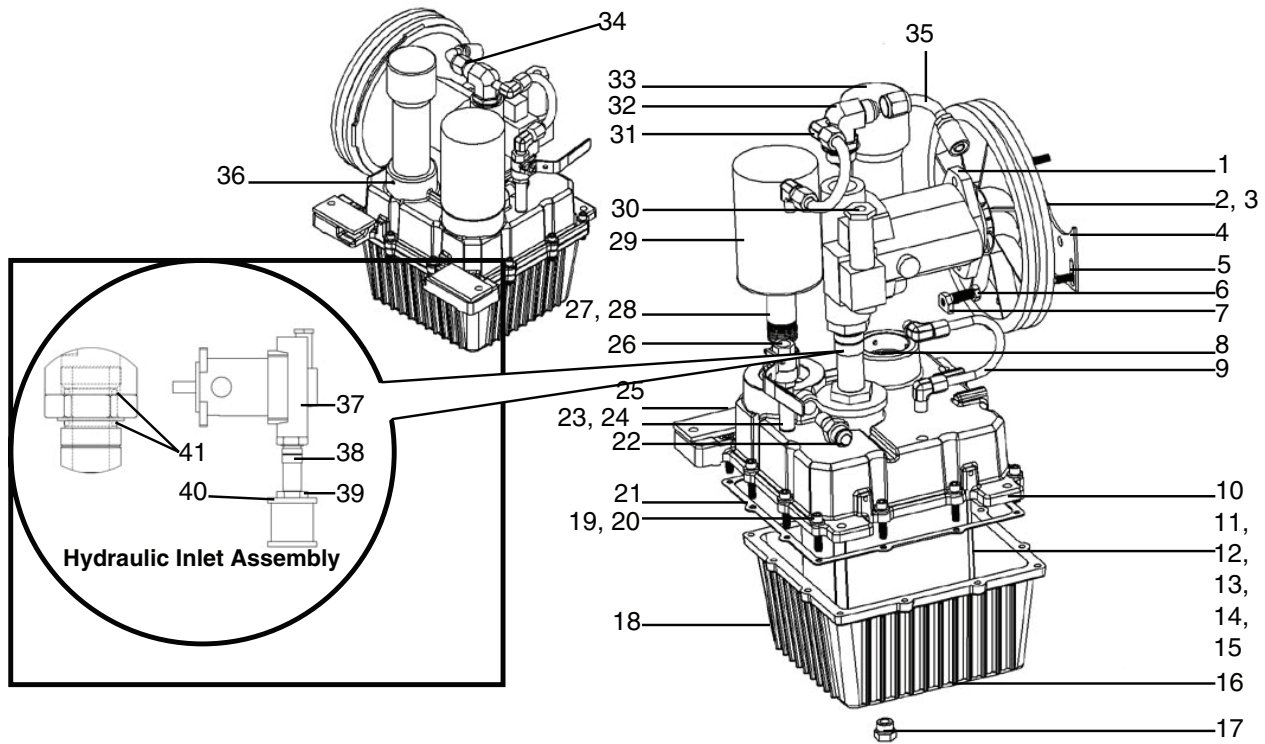
Pump Packing Diagram



Ref.	Part	Description	Qty.
1*	198718	Leather Packing Set	6
2*	112590	Throat Seal Plug	1
3	15J792	Packing Nut	1
4*	157195	O-Ring	1
5	15G657	Female Gland	1
6*	198701	Blue Packing Set	8
7*	15G658	Male Gland	1
8+		Piston Rod	1
9*	189585	Male Gland	1
10*	189588	Female Gland	1
11*	119636	Piston Wiper	1
12*	15F183	Backup Washer	1
13*	107203	Ceramic Ball	1
14	249177	Piston Valve	1
15	16C204	Pump Cylinder	1
16*	160325	O-Ring	1
17*	108822	O-Ring	2
18	244975	Cylinder Sleeve	1
19	198505	Ball Guide	1
20+	249770	Compression Spring	1
21*+	107167	Ceramic Ball	1
22+	193395	Carbide Seat	1
23*+	107098	O-Ring	1
24	15A303	Intake Housing	1
25	243814	Hose	1
26	288251	Suction Hose	1
27	116551	Retaining Ring	1
28	197443	Pin	1
29	193394	Jam Nut	1
30	24E350	Pump Kit	1
*	24E351	Included in Kit	1
+	24E352	Included in Kit	1

ti9569a

Hydraulic Pump and Reservoir (866205)

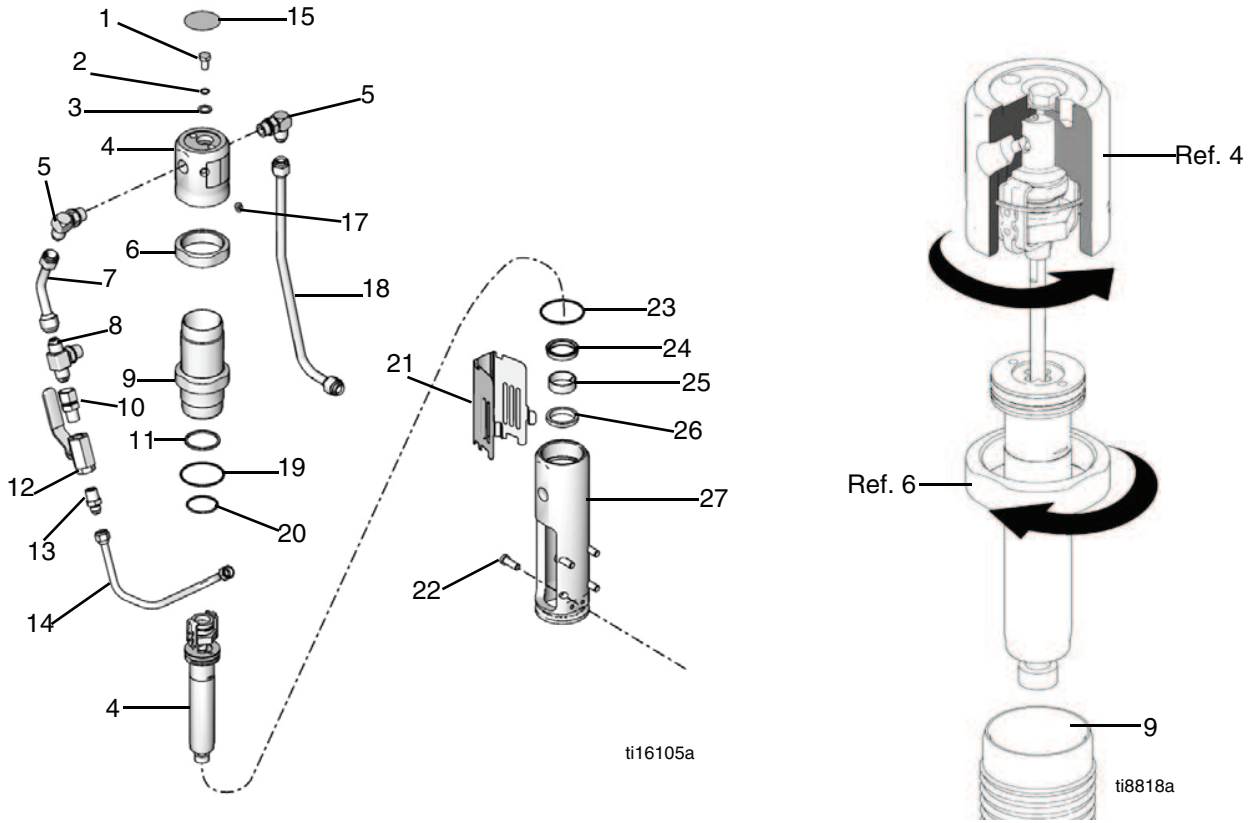


ti16103a

NOTE: Hydraulic Reservoir and Hydraulic System requires 3.5 gallons of Hydraulic Oil #46. The minimum Oil Level must be approximately halfway up the Filler Tube. Never below.

Ref.	Part	Description	Qty.	Ref.	Part	Description	Qty.
1	866204	Pump Assy	1	22	867226	Hydraulic Fitting	1
2	867587	Set Screw	1	23	867311	Nipple	1
3	867442	Pully Assembly	1	24	867017	Swivel	1
4	867093	Pump Bracket	1	25	867305	Hold Down Plate	1
5	111800	Screw	2	26	867062	Ball Valve	1
6	867025	Bolt	1	27	866129	Fitting	1
7	136235	Nut	1	28	119093	Oil Filler Tube	1
8	867347	Filler O-Ring	1	29	867218	Oil Filter	1
9	866201	Hydraulic Bypass Tube	1	30	866279	Hydraulic Pressure Adjustment	1
10	867656	Reservoir Top	1	31	866202	Hydraulic Press Tube	1
11	867657	Baffle	1	32	866131	Elbow	1
12	866027	Baffle Plate	1	33	866121	Filler/Breath Cap	1
13	867040	Baffle Stopper	1	34	867654	3/4" Swivel	1
14	136134	Rivet	4	35	867285	Hydraulic Return Hose	1
15	140042	Washer	1	36	101962	Set Screw	2
16	866236	Pump Fitting Nut	1	37	867288	Hydraulic Pump (Bare)	1
17	189505	Reservoir Plug	1	38	866296	Pump Inlet Tube	1
18	867657	Reservoir Bottom	1	39	866236	Hex Nut	1
19	113467	Cap Screw	12	40	867644	Suction Strainer	1
20	867301	Lockwasher	12	41	867386	O-Ring	2
21	119074	Reservoir Gasket	1				

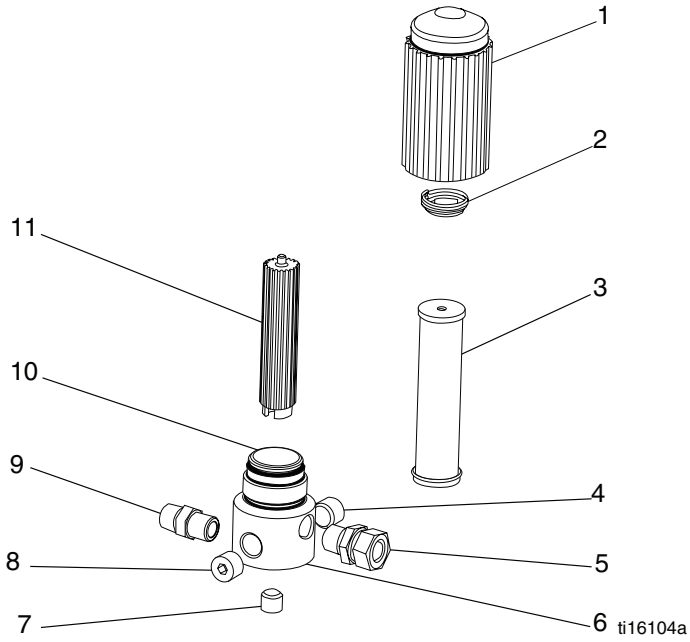
Hydraulic Motor (24E360)



Ref.	Part	Description	Qty.	Ref.	Part	Description	Qty.
1*	106276	Cap Screw	1	14	15J819	Supply Tube	4
2	155685	O-Ring	1	15*	15B063	Label	1
3*	178179	Sealing Washer	1	17*	100139	Plug	1
4	288755	Repair kit, Trip Rod/Piston	1	18	15J824	Hydraulic Tube	1
5	117607	Fitting	2	19*	178226	Piston Seal	1
6	15A726	Jam Nut	1	20*	108014	O-Ring	1
7	15E596	Supply Tube	1	21	15J503	Rod Shield	1
8	117609	Tee Fitting	1	22	15B564	Cap Socket Screw	1
9	248991	Sleeve	1	23*	117283	O-Ring	1
10	117328	Straight Fitting	1	24	112561	Packing Block	1
11*	178207	Piston Bearing	1	25	112342	Rod Bearing	1
12	867062	Ball Valve	1	26	117739	Rod Wiper	1
13	116813	Fitting	1	27	15E243	Manifold	1

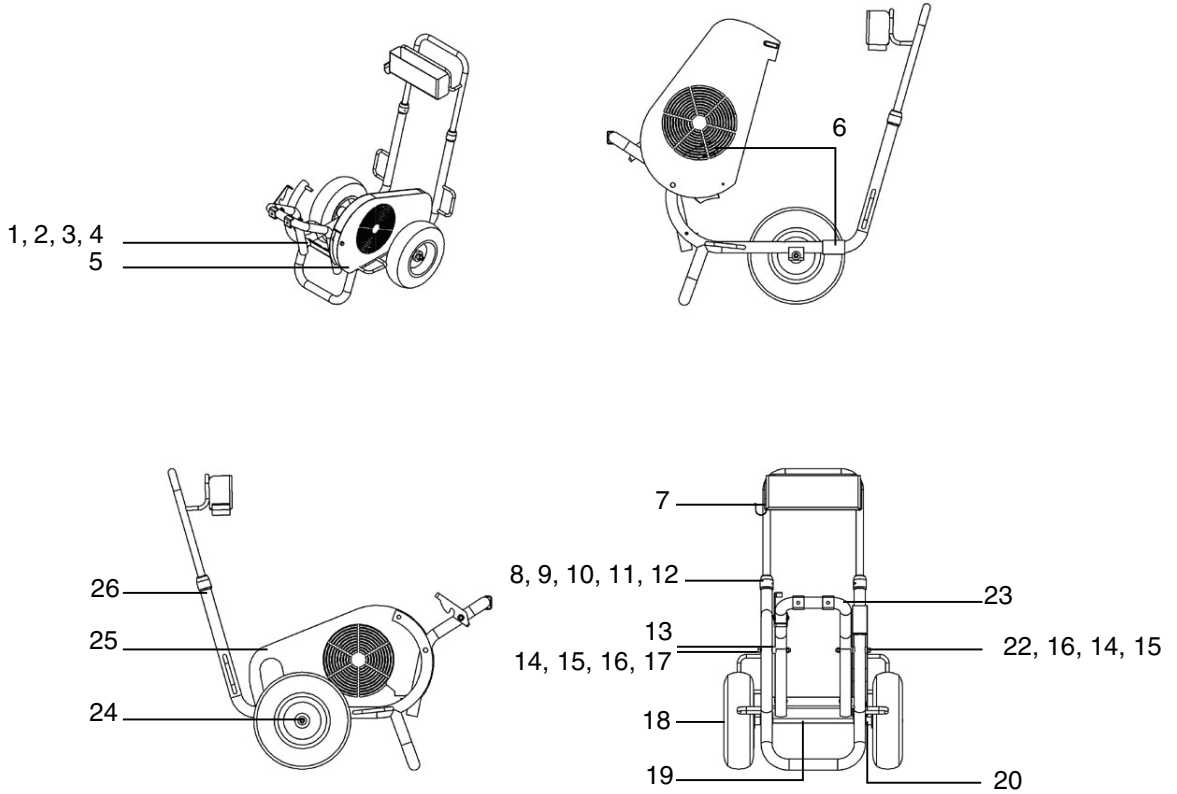
*Included in Kit 288735

Manifold Filter (866123)



Ref.	Part	Description	Qty.
1	867145	Housing Bowl	1
2	301356	Spring	1
3	867214	60 Mesh Filter	1
4	867017	Swivel	1
5	867652	Swivel	1
6	867077	Housing Base	1
7	867417	Plug	1
8	867420	Plug	1
9	867311	Nipple	1
10	867377	O-Ring, PTFE	1
11*	867647	Filter Support	1

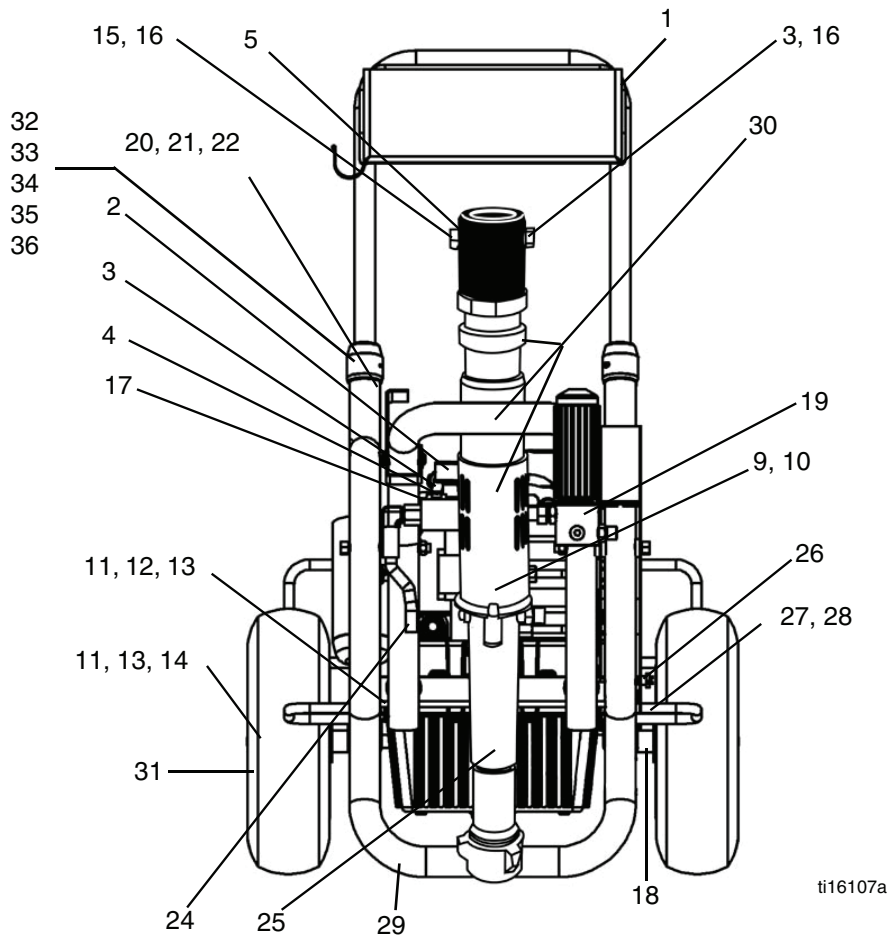
Frame Assembly



ti16106a

Ref.	Part	Description	Qty.	Ref.	Part	Description	Qty.
1	140029	Washer	1	14	866412	Pivot Tube	1
2	136217	Nut, Jam, 1/4-20	1	15	867707	Washer	1
3	867501	Screw	1	16	140051	Nut	1
4	867098	Stop Bumper	1	17	867518	Hex Bolt	1
5	136233	Riv-Nut	1	18	301165	Wheel	1
7	867262	Handle Assy	1	19	301170	Axle	1
8	866156	Guide	1	20	866356	Spacer	1
9	866344	Slide	1	22	867519	Hex Bolt	1
10	331222	Roll Pin	1	23	866780	H Support Assy	1
11	867605	Snap Button	1	24	143029	Set Collar	1
12	866050	Cover	1	25	867086	Belt Cover	1
13	866353	Spacer	1	26	867236	Frame	1

Complete Sprayer Assembly

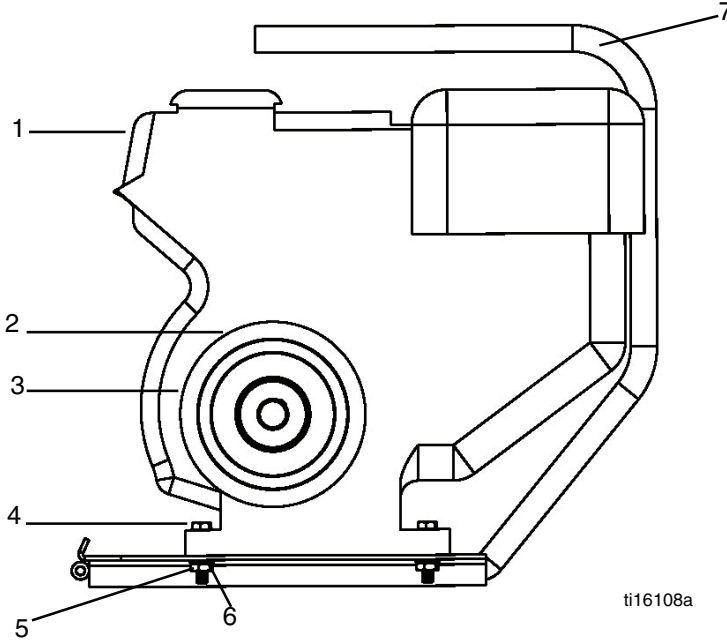


Ref.	Part	Description	Qty.	Ref.	Part	Description	Qty.
1	867262	Handle	1	24	248217	Bypass Assembly	1
2	866205	Hydraulic Assy	1	25	289669	Suction Assembly (30 Gal) (Not Shown)	1
3	867284	Hydraulic Pressure Hose	1	26	119088	Spring Loaded Pin	1
5	24E350	Pump Displacement	1	27	136133	Chain Ring	1
9	804582	Pressure Gauge	1	28	136131	Grounding Chain	1
10	867187	Elbow	1	29	867236	Frame	1
11	140035	Flat Washer	1	30	866880	Kit, Swing Arm Assy*	
12	100004	Screw	1	31	301165	Wheel	2
13	140051	Nut	1	32	867605	Snap Button	1
14	867518	Screw	1	33	331222	Roll Pin	1
15	867285	Hydraulic Return Hose	1	34	866344	Slide	1
16	867027	Elbow	1	35	866156	Guide	1
17	865719	Prime Valve	1	36	866050	Cap	1
18	301170	Axle	1		24F690	Gun, Mastic (Not Shown)	1
19	866175	Manifold Filter	1		HSE3850	Hose, 3/8" x 50' (Not Shown)	1
20	867320	Nut, 10-24 Vinyl Lock	1		255439	Hose 1/4" x 3' (Not Shown)	1
21	331342	Screw	1		164672	Adaptor (Not Shown)	1
22	867622	Spring Clip	1		342402▲	Label, Warning (Not Shown)	1
					342404▲	Label, Warning (Not Shown)	1

▲ Additional warning labels are available at no cost.

*Includes Hydraulic Motor, Paint Pump and Swing Arm Frame.

Power Unit - HSS 9000

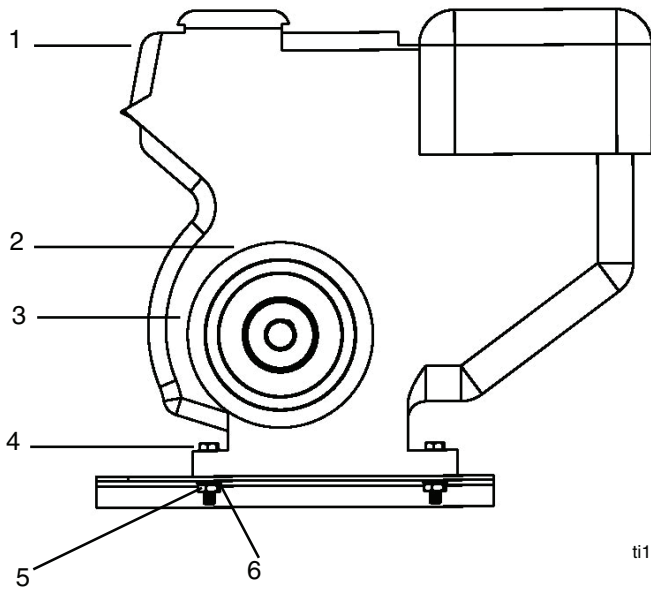


Ref.	Part	Description	Qty.
1	116080	GX200 Honda Gas Engine	1
2	555516	Set Screw	4
3	867441	Pully	1
4	136123	Screw	1
5	867324	Nut	1
6	867301	Lock Washer	1
7	867299	Lifting Handle/Plate Assy	1
8	189524	V-Belt (not shown)	1
9	342402▲	Warning Decal (not shown)	1

▲ Additional warning labels are available at no cost.

ti16108a

Power Unit - HSS 11000



Ref.	Part	Description	Qty.
1	803900	GX270 Honda Gas Engine	1
2	555516	Set Screw	4
3	867442	Pully	1
4	136123	Screw	1
5	867324	Nut	1
6	867301	Lock Washer	1
8	189514	V-Belt (not shown)	1
9	342402▲	Warning Decal (not shown)	1

▲ Additional warning labels are available at no cost.

ti16109a